

DEVELOP

Dynamic balance

www.develop.eu

ineo⁺ 3110

colour | 31 ppm



The office device to meet all your needs

In offices where space is at a premium a compact printer-copier-scanner is the ideal “one fits all” solution. The new ineo+ 3110 from DEVELOP combines feature flexibility with functions that streamline office workflows and boost productivity. Select the device configuration that meets your specific needs and then save time in routine tasks. Just what your small team or office needs!



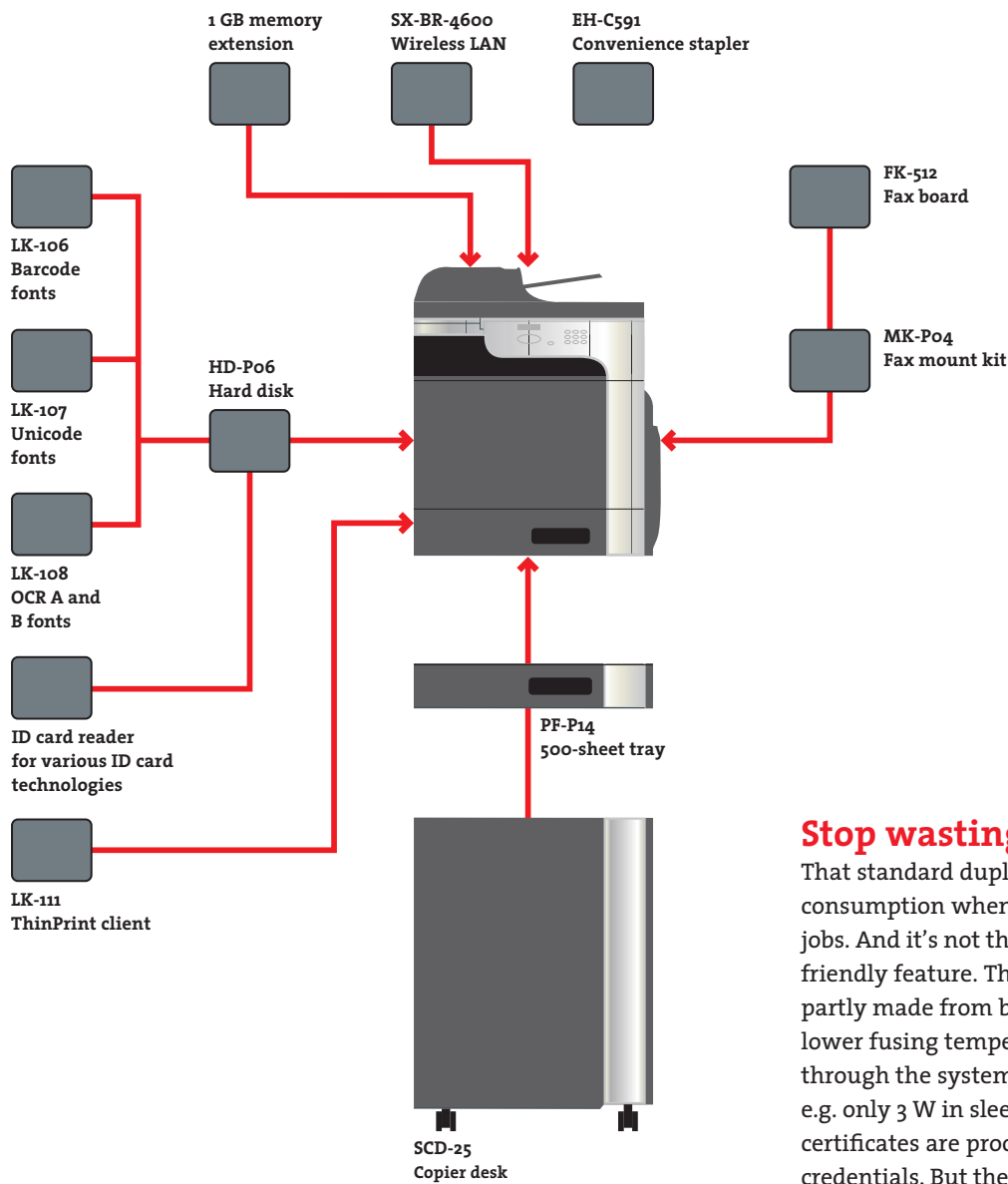
Select functions you really need

Some compact office systems come with functions you don't really need. Others cannot be augmented to include features you want. The ineo+ 3110 is different. Its basic functionality – printing, copying and scanning – can be supplemented to suit your requirements through additional features such as a fax, Unicode or barcode printing and an accounting function with a card reader. In a small team, an individual office or a home office this kind of flexibility ensures you get precisely the device you need. It also means that in a bigger business environment the ineo+ 3110 can be aligned with large office systems (e.g. A3 printers) to standardise fleet handling. And that will save your IT administrator lots of work.

Streamline your office workflows

Although the paperless office has never happened, all efficient office workflows are now digitised. As a result, numerous paper-based documents have to be scanned and correctly archived – a time-consuming business by conventional means. Here, DEVELOP offers various software tools to speed up digitisation from an ineo+ 3110. You can scan documents straight to an email account, FTP server, hard disk, archive or any other networked destination you want. And that will really enhance your office efficiency.

ineo+ 3110 with additional tray (PF-P14)
and copier desk (SCD-25)



Stop wasting energy and paper

That standard duplex unit will halve your paper consumption when printing or copying high-volume jobs. And it's not the only money-saving, environment-friendly feature. The ineo HD polymerised toner is partly made from biomass and saves energy through a lower fusing temperature. You'll save more money through the system's energy-efficient performance, e.g. only 3 W in sleep mode. Blue Angel and Energy Star certificates are proof of the system's environmental credentials. But the bottom line for you is money saved and the knowledge that your new ineo+ 3110 is as green as they get.

Save time in everyday tasks

An office device that processes and prints documents fast is a genuine time-saver in everyday tasks. That is exactly what the ineo+ 3110 has been designed to do. A high-performance DEVELOP controller and an output of 31 pages per minute in colour or black and white, maintained in the standard duplex printing mode, deliver a productivity-boosting performance from a device with a very compact footprint. So the ineo+ 3110 will save you time in routine office jobs and space in a small office.



ineo+ 3110

GENERAL DATA

Type of machine

Desktop system

Printing and copying speed

> A4

Max. 31/31 ppm (colour/black & white)

Print system

Laser

Gradation

256

Paper feeder

> Standard: 350 sheets, max. 850 sheets

> 250-sheet cassette (A6–A4, 60–210 g/m²)

> 100-sheet bypass (A6–A4+, 60–210 g/m²)
for standard paper, envelopes, thick paper

Paper format

Max. 216 x 356 mm

Printable area

Max. 207.6 x 347.6 mm

Warm-up time

less than 36 seconds

Dimensions (w x h x d)

447 x 544 x 500 mm (main body)

Weight

29.5 kg (without options and consumables)

Power

230 V / 50/60 Hz

PRINTER SPECIFICATIONS

Controller

Embedded controller with 1.066 GHz

Memory

1 GB RAM, max 2 GB;
optional: 320 GB HDD

Resolution

1,200 x 1,200 dpi (max.)

Network protocols

TCP/IP (IPv4/IPv6), SMB, LPD, IPP, SNMP,
HTTP, HTTPS

Emulation

Standard: PCL5e/c, PCL6, PS 3,
Optional: XPS

Interfaces

Ethernet 10/100/1000 BaseT, USB 2.0,
Host USB (USB Drive Printing)

Driver

Windows Vista (32/64)

Windows 7 (32/64)

Windows 8 (32/64)

Windows Server 2003 (32/64)

Windows Server 2008 (32/64)

Windows Server 2008 R2

Windows Server 2012 (64)

Windows Server 2012 R2

Macintosh OS X 10.x

Linux

Citrix

Print functions

Duplex print, overlay, watermark, N-up, poster,
booklet, Secure Print

optional: Direct print of TIFF, XPS, PDF, JPEG,
OOXML (PPTX, DOCX, XLS), USB Direct Print

SCAN SPECIFICATIONS

Type of scanning

Scan-to-eMail (Scan-to-Me)

Scan-to-SMB (Scan-to-Home)

Scan-to-FTP

Scan-to-USB

Scan-to-HDD (optional HDD required)

Scan-to-DPWS

Network TWAIN scan

Resolution

Max. 600 x 600 dpi optical resolution

Scanning speed

Up to 30 ipm (colour/black & white)

Size of originals

Max. A4

Scanning formats

TIFF, PDF, Compact PDF, JPEG,
XPS (optional HDD required)

COPY SPECIFICATIONS

Document feeder

> Duplex document feeder (standard)

> 50 sheets

> 50–110 g/m²

Zoom

25–400 % in 1 % steps

First A4 copy

15/13 seconds (colour/black & white)

Memory

1 GB RAM (optional: 2 GB)

HDD

optional 320 GB HDD

Resolution

600 x 600 dpi

Copier functions

duplex, electronic sorting, ID-card copy,
2/4-in 1, poster mode

FAX SPECIFICATIONS (OPTIONAL)

Compatibility

Optional G3/Super G3, MH, MR, MMR, J-BIG/ECM

Transfer rate/transfer speed

33.6 kBit/s, 3 seconds ITU-No. 1

Fax memory

Uses copier memory

Fax functions

PC-Fax, fax forwarding to e-mail/fax,
timer transmission

OPTIONS

> 500-sheet cassette (A4; 60–90 g/m²)

> Fax kit

> Fax mount kit

> Wireless LAN

> 1 GB memory extension

> Convenience stapler

> 320 GB HDD

> Copy desk

> ID card reader

> LK-106 Barcode fonts

> LK-107 Unicode fonts

> LK-108 OCR A and B fonts

> LK-111 ThinPrint® Client

SOFTWARE SOLUTIONS

> Data Administrator

> Enterprise Device Manager

> Enterprise Account Manager (optional)

> Enterprise Authentication Manager (optional)

> WebConnection

> ineo Remote Care (optional)



DEVELOP

Konica Minolta Business Solutions Europe GmbH

Europaallee 17 30855 Langenhagen Germany Phone +49 511 7404-0 www.develop.eu

All data relating to the paper capacities of the document feeder, the final processing accessories and the paper cassettes apply to paper weighing 80 g/m² unless expressly stated otherwise. All data relating to the speed of printing, scanning or faxing apply to paper of an A4 format weighing 80 g/m² unless expressly stated otherwise.

All data relating to paper weights apply to media that are recommended by Konica Minolta. All technical data correspond to knowledge available at the time of going to print. Konica Minolta reserves the right to make technical alterations.

DEVELOP and ineo are registered trademarks/product titles owned by Konica Minolta Business Solutions Europe GmbH.

All other brand or product names are registered trademarks or product titles of their respective manufacturers. Konica Minolta does not accept any liability or guarantee for these products.

August 2014